



Model HX

Packaged, indoor-mounted, energy recovery ventilator designed to minimize the cost of providing fresh, outdoor ventilation air to small indoor spaces. The super-economical and compact design features a polymer, air-to-air, flat plate heat exchanger. Suitable for smaller applications including residential homes, apartments, restaurants, bars, day care centers, clinics, restrooms, offices, small businesses, etc.



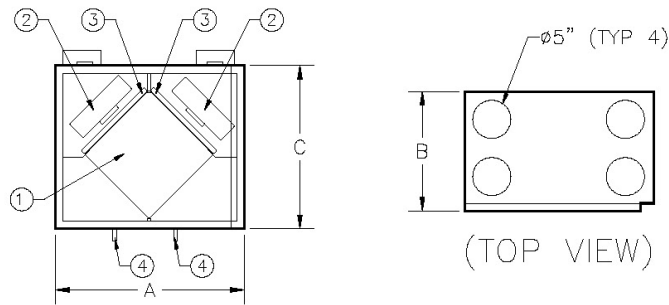
- Medium-duty, high-economy, packaged unit allows simple installation into small spaces such as mechanical rooms, mezzanines, and inner floors and provides easy servicing and access from both sides. Can be installed on a platform or suspended from the ceiling.
- The HX is well-suited for custom residential and small commercial applications.

www.xetexinc.com

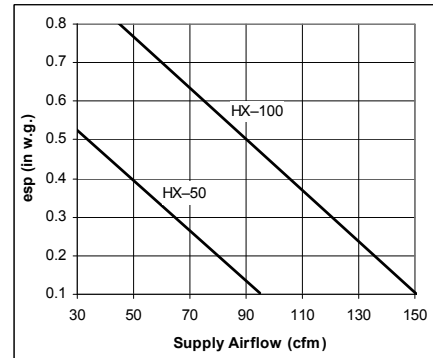
Model: HX

- ① POLYPROPYLENE HEAT EXCHANGER CORE
- ② BLOWER AND DIRECT DRIVE MOTOR
- ③ WASHABLE ALUMINUM FILTER OR OPTIONAL CARBON OR HIGH EFFICIENCY FILTER
- ④ DRAIN

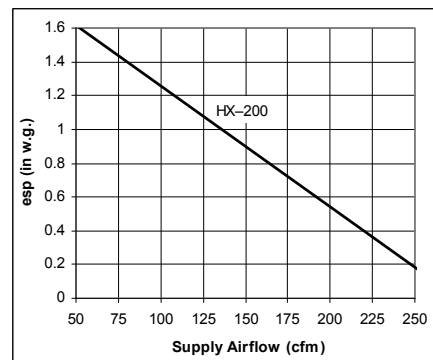
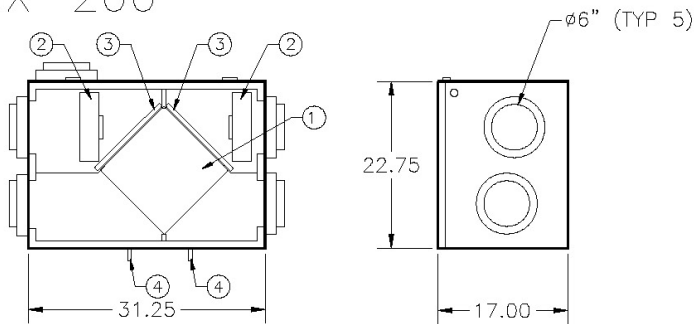
HX-50, 100



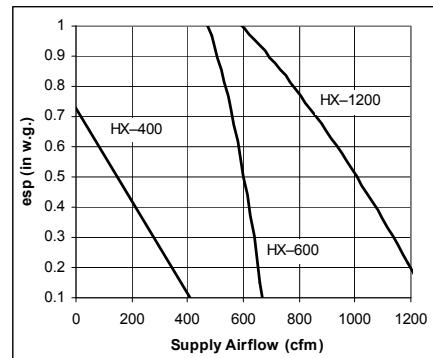
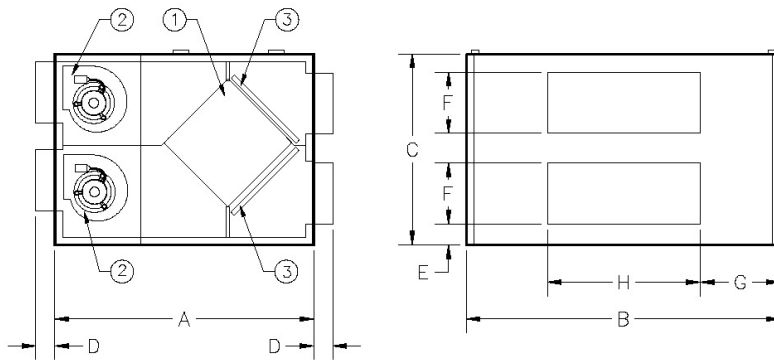
FAN CURVES



HX-200



HX-400, 600, 1200

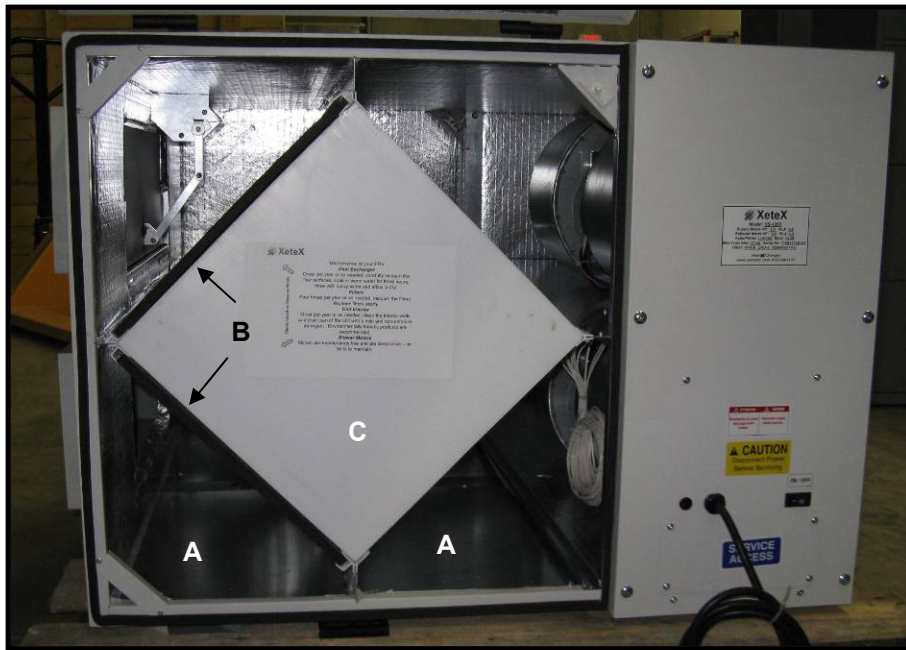


Model #	Dimension (Inches)								Motor Amps	Est. Weight	Max CFM
	A	B	C	D	E	F	G	H			
HX - 50	20.25	13.50	20.38						1.4	43	80
HX - 100	24.75	15.63	21.38						1.8	58	145
HX - 200	(See Diagram Above)								2.2	62	260
HX - 400	30.00	16.88	25.00	2.50	3.63	8.00	2.75	8.00	6.6	70	400
HX - 600	33.88	28.13	25.00	2.50	2.75	8.00	7.00	14.00	7.6	150	600
HX - 1200	33.88	41.13	25.00	2.50	2.75	8.00	10.50	20.00	11.8	185	1200

Standard Power: 120 V / 60 Hz / 1~

Super Efficient Energy Recovery for School Ventilation

This unit and two similar ones were built to control humidity in a locker room, restroom, and janitorial room for a school in Maine. The compact design allowed them to all be easily fit into very small mechanical rooms. The prepackaged controls and electrical equipment were designed to use standard 120 V power, making it plug-in-ready on delivery. During winter, the flat plate heat exchanger is able to recover 62% of the energy in the leaving exhaust air, making it as economical in operation as it is in initial investment.



(A): Drain Pan, (B): High Efficiency Filters, (C): Flat Plate Heat Exchanger

Unit Features

- Polypropylene flat plate exchanger recovers 43 MBH of heat in winter design conditions.
- Forward curved, DWDI supply and exhaust air blowers have three speed, high efficiency, direct drive motors.
- Heavy Duty aluminum case has 20 gauge panels, large access doors, and 1" thick fiberglass insulation.
- High Efficiency SA and RA filters
- SA fan cycle frost control



Performance Specification

Model: **HX-1200**

Supply cfm: 850

Exhaust cfm: 850

Built: September 2008

Dimensions: 25" H, 39" L, 41" W

Weight: 185 lbs





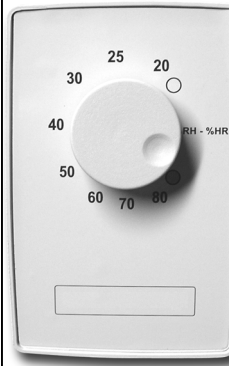
Energy 43 MBH (Winter)

Recovered: 8 MBH (Summer)

Design -7 °F / 54% RH (Winter)

Conditions: 88 °F / 44% RH (Summer)

Optional Remote Controllers

LCD Humidistat	Mode Control	Speed Control	Timer	Humidity Control
Allows the user to adjust an indoor humidity set-point and choose from several operating modes. When humidity exceeds the set point, the unit starts in the appropriate mode. It also displays the ambient humidity rate and detects variations in humidity.	Allows the user to select from four pre-programmed operating modes: <ul style="list-style-type: none"> • Circulation mode • Low-speed exterior exchange mode • High-speed exterior exchange mode • Stop mode 	Allows the use to select from four pre-programmed unit speed modes: <ul style="list-style-type: none"> • Intermittent mode (20 min on, 40 min off) • Low-speed exterior exchange • High-speed exterior exchange • Stop or recirculation 	Allows the user to turn on the unit for a 20, 40, or 60 minute interval. During this time, the unit will exchange indoor and outdoor air at high-speed.	An adjustable dial on this mechanical humidistat allows the user to select an indoor humidity set point. When the humidity exceeds this set point, the user can activate the unit. When the humidity falls below the set point, the unit will return to a pre-selected operating mode.
				

Model HX Unit Specification

Contractor shall provide a Model HX packaged, air-to-air heat recovery ventilator as manufactured by XeteX, Inc. Unit to include a polypropylene core flat plate heat exchanger, supply air and exhaust air fans, motors with relays, outside air and return air filters, inlet and exhaust air dampers, and frost control.

Unit shall have a cabinet formed of [24 gauge (for HX-50, 100, 200) or 20 gauge (for HX-400, 600, 1200)] painted steel with aluminum interior. Frame and panels to have 1" thick, fiberglass insulation with aluminum foil liner. Drain pans shall be noncorrosive plastic with integrated universal drains on the bottom of the unit in the supply and exhaust air plenums.

Provide access to all exchanger surfaces and filters through removable and gasketed access doors.

Air-to-air heat exchanger shall be a flat-plate type designed to recover the maximum amount of heat from the exhaust airstream. Heat transfer surface shall be formed polypropylene plates resistant to extreme temperature changes. The entire cell shall be capable of being removed, visibly inspected, and cleaned as required.

The unit shall be supplied with a [backward-inclined (for HX-50, 100, 200) or double-inlet forward-curved (for HX-400, 600, 1200)] blower in each airstream arranged in a draw-through configuration relative to the exchanger for quiet and efficient operation. Blowers shall be operated by direct drive [single-speed (for HX-50, 100, 200), double-speed (for HX-400), or three-speed (for HX-600, 1200)], maintenance-free motors.

Electrical controls shall include motor capacitors and relays, control transformer for low voltage controls, and terminal blocks. Frost control shall be accomplished by using the signal from a temperature sensor in the exhaust air stream to control [a recirculation damper (standard for HX-50, 100, 200; optional for HX-600, 1200) or the supply air motor (standard for HX-400, 600, 1200)]. No further control equipment shall be necessary to operate the unit. As an option, however, a digital humidistat with liquid crystal display, analog humidistat, timer, or single-button switch shall be provided to allow remote control of the unit.

Standard outdoor air and return air filters shall be washable aluminum type (or optional carbon or high efficiency filters). Filters shall be mounted within unit on the upstream faces of the exchanger and accessible through access panels.