



Models: PXCH, PXCv, PXHR, & PXHS

High efficiency, packaged, air-to-air heat recovery ventilator designed specifically for dehumidification and ventilation of swimming pools and natatoriums in custom residential, community recreation, hotel, water park, and school applications.

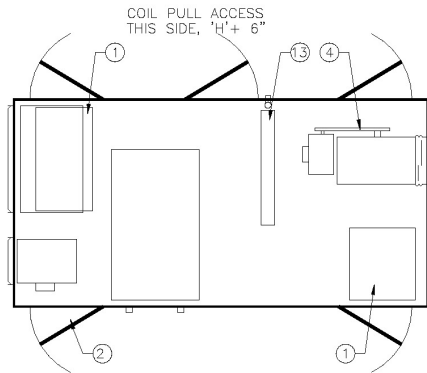


The PX line consists of high efficiency energy recovery ventilators constructed to withstand high moisture conditions and avoid freezing.

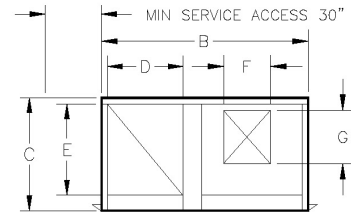
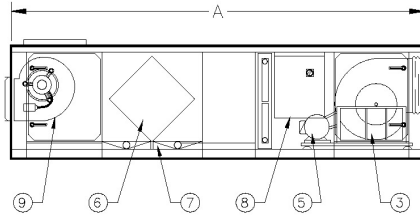
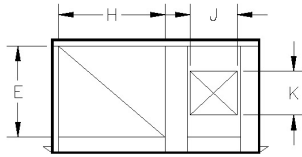
- The PXCH has a low profile configuration with a highly-efficient double pass heat exchanger capable of handling 1,000 to 9,000 cfm for pools up to 1,300 square feet.
- The PXCv has a small footprint configuration with a highly-efficient double pass exchanger capable of handling 1,000 to 4,000 cfm for pools up to 1,000 square feet
- PXHR and PXHS units have higher capacity, single pass exchangers that can handle up to 60,000 cfm and beyond, for larger pool and recreation areas.

www.xetexinc.com

Model: PXCH



- ① 2" 30/30 TYPE PLEATED FILTERS (0A/EA)
 - ② ACCESS DOORS
 - ③ SUPPLY AIR BLOWER
 - ④ V-BELT DRIVES
 - ⑤ NEMA TEFC MOTOR
 - ⑥ ALUMINUM FLAT PLATE HEAT EXCHANGER
 - ⑦ FPT DRAINS
 - ⑧ ELECTRICAL ENCLOSURE
 - ⑨ EXHAUST BLOWER
- STANDARD ROOF MOUNT OPTIONS
- 10 WEATHERHOOD WITH BIRDSCREEN
 - 11 OUTSIDE AIR SHUTOFF DAMPER
 - 12 EXHAUST AIR BACKDRAFT DAMPER
- OPTIONS
- ⑬ HOT WATER COIL
 - 14 INDIRECT GAS FIRED FURNACE SECTION
 - 15 COOLING/DEHUMIDIFICATION COIL (CW,DX)
 - 16 AUXILIARY EXHAUST BLOWER (FIELD MOUNTED)



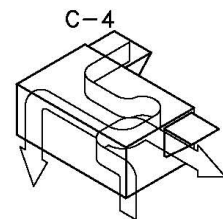
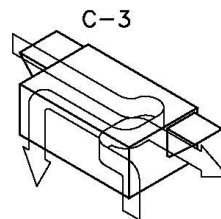
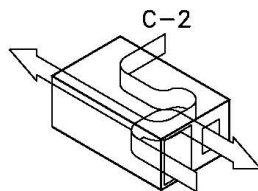
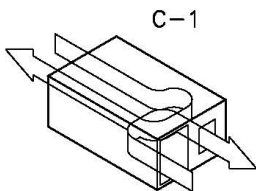
Model #	Dimension (Inches)										Pool Sq. Ft	Nominal SA CFM	Est. Weight
	A	B	C*	D	E	F	G	H	J	K			
PXCH-1010 ¹	96	46	32	18	24	10	11	24	10	11	500	1,000	750
PXCH-1015 ¹	96	46	32	18	24	12	13	24	10	11	500	1,500	750
PXCH-1020 ¹	96	46	32	18	24	14	13	24	10	11	500	2,000	750
PXCH-1025 ¹	96	46	32	18	24	13	15	24	10	11	500	2,500	750
PXCH-1030 ¹	96	46	32	18	24	12	13	24	10	11	500	2,800	750
PXCH-1515 ¹	114	50	38	18	32	10	12	28	11	12	750	1,500	950
PXCH-1520 ¹	114	50	38	18	32	12	13	28	11	12	750	2,000	950
PXCH-1525 ¹	114	50	38	18	32	12	13	28	11	12	750	2,500	950
PXCH-1530 ¹	114	50	38	18	32	12	13	28	11	12	750	3,000	950
PXCH-1540 ²	120	60	38	24	32	17	15	32	11	12	750	4,000	1,100
PXCH-1550 ²	120	60	38	24	32	17	15	32	11	12	750	5,000	1,100
PXCH-2020 ¹	120	60	38	24	32	12	13	32	11	12	1,000	2,000	1,100
PXCH-2030 ¹	120	60	38	24	32	13	15	32	11	12	1,000	3,000	1,100
PXCH-2040 ²	120	60	38	24	32	17	15	32	11	12	1,000	4,000	1,100
PXCH-2050 ²	120	60	38	24	32	17	15	32	11	12	1,000	5,000	1,100
PXCH-2060 ²	132	66	39	24	24	19	16	38	13	14	1,000	6,000	1,500
PXCH-2070 ²	132	66	39	24	24	22	19	38	13	14	1,000	7,000	1,600
PXCH-2080 ²	132	66	39	36	24	22	19	38	13	14	1,000	8,000	1,600
PXCH-2530 ¹	156	72	50	36	36	13	14	40	13	14	1,300	3,000	2,000
PXCH-2540 ²	156	72	50	36	36	16	14	40	13	14	1,300	4,000	2,000
PXCH-2550 ²	156	72	50	36	36	16	14	40	13	14	1,300	5,000	2,000
PXCH-2560 ²	156	72	50	36	36	19	16	40	13	14	1,300	6,000	2,000
PXCH-2570 ²	156	80	52	36	36	22	19	46	13	14	1,300	7,000	2,500
PXCH-2580 ²	156	80	52	36	36	22	19	46	13	14	1,300	8,000	2,500
PXCH-2590 ³	156	80	52	36	36	22	19	46	13	14	1,300	9,000	2,500

¹ Add 18" minimum to dim A for cooling coil section.

² Add 24" minimum to dim A for cooling coil section.

³ Add 30" minimum to dim A for cooling coil section.

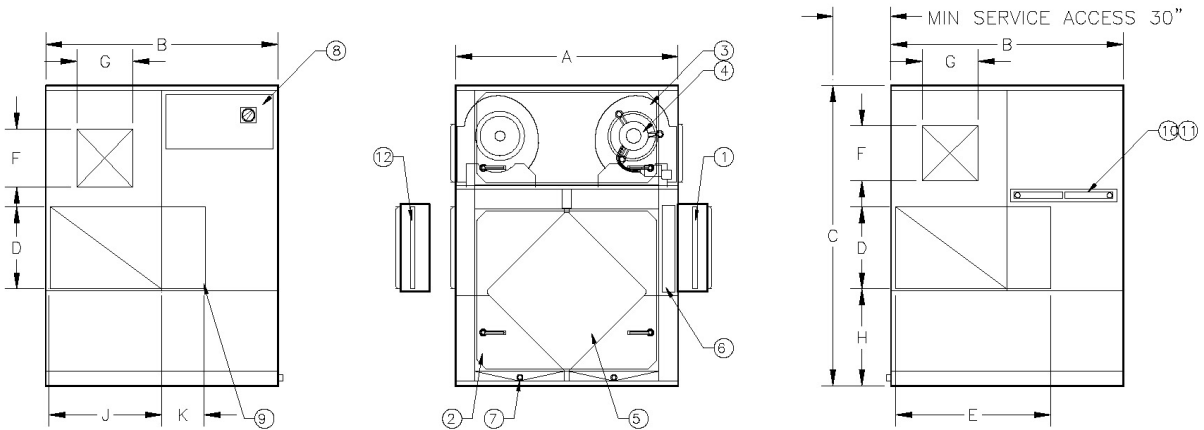
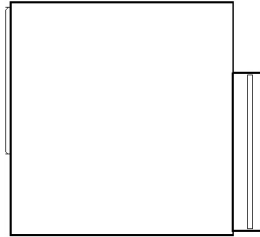
* Does not include custom height of Roof Curb.



Consult factory for other available configurations.

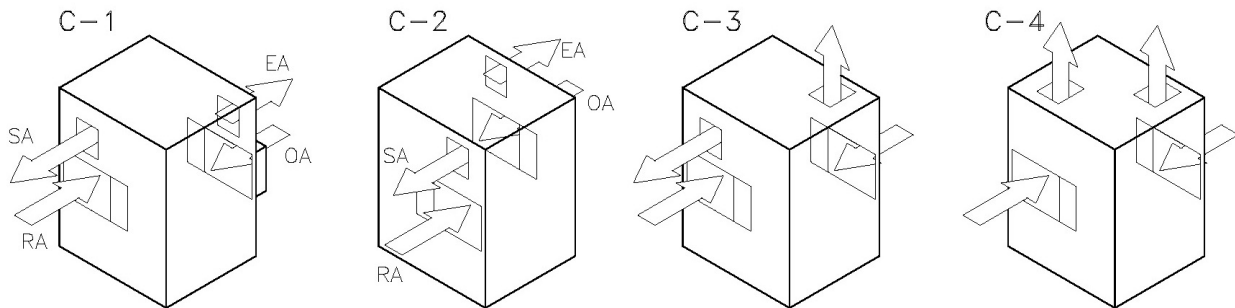
Model: PXCVC

- ① 2" 30/30 TYPE PLEATED FILTERS
 - ② ACCESS DOORS
 - ③ FC DWID BLOWERS
 - ④ NEMA TEFC MOTOR
 - ⑤ ALUMINUM FLAT PLATE HEAT EXCHANGER
 - ⑥ OA CONTROL DAMPER
 - ⑦ NPT DRAINS
 - ⑧ ELECTRICAL ENCLOSURE
- OPTIONS
- ⑨ EXHAUST RELIEF DAMPER
 - ⑩ HOT WATER COIL
 - ⑪ ELECTRIC REHEAT COIL
 - ⑫ RETURN AIR FILTERS



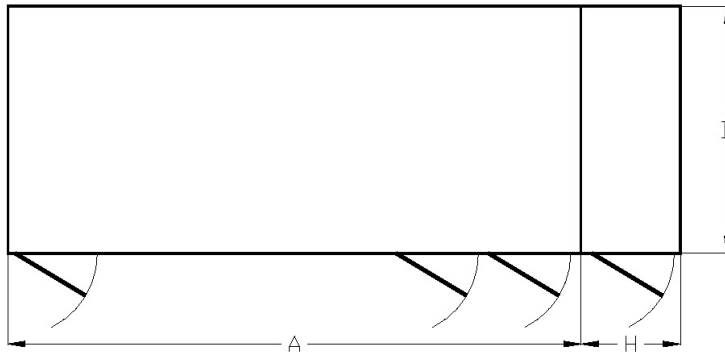
Model #	Dimension (Inches)										Pool Sq. Ft	Nominal SA CFM	Est. Weight
	A	B	C*	D	E	F	G	H	J	K			
PXCVC-1010	36	38	56	16	25	11	9	18	18	7	500	1000	650
PXCVC-1015	36	38	56	16	25	11	9	18	18	7	500	1,500	650
PXCVC-1020	36	38	56	16	25	11	9	18	18	7	500	2,000	700
PXCVC-1515	48	50	68	22	34	13	12	21	24	10	750	1,500	800
PXCVC-1520	48	50	68	22	34	13	14	21	24	10	750	2,000	800
PXCVC-1525	48	50	68	22	34	15	13	21	24	10	750	2,500	800
PXCVC-1530	48	50	68	22	34	13	12	21	24	10	750	3,000	850
PXCVC-1535	48	50	68	22	34	13	12	21	24	10	750	3,500	850
PXCVC-2020	48	50	70	22	34	15	13	21	24	10	1,000	2,000	900
PXCVC-2025	48	50	70	22	34	15	13	21	24	10	1,000	2,500	900
PXCVC-2030	48	50	70	22	34	13	12	21	24	10	1,000	3,000	950
PXCVC-2035	48	50	70	22	34	13	12	21	24	10	1,000	3,500	950
PXCVC-2040	48	50	70	22	34	15	13	21	24	10	1,000	4,000	1,000

* Add 6" minimum to dim C for heating coil section. (Cooling coil not available.) Does not include custom height of Roof Curb.

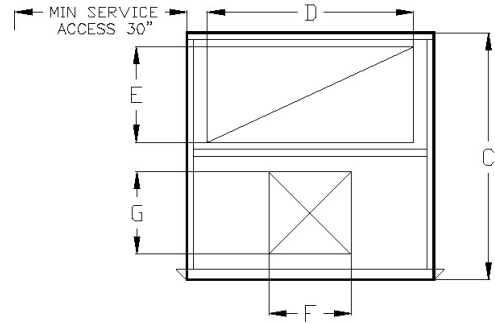
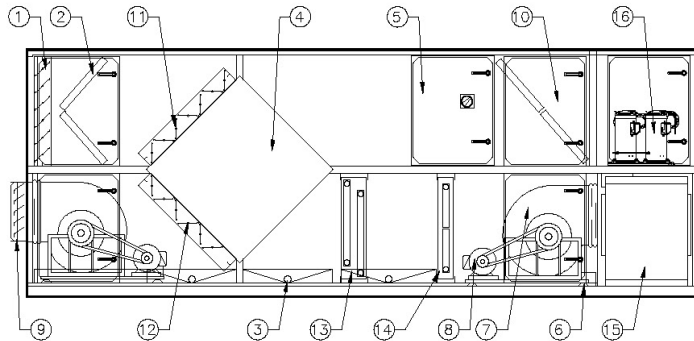


Consult factory for other available configurations.

Model: PXHR



- ① OUTSIDE AIR SHUTOFF DAMPER
 - ② 2" 30/30 TYPE PLEATED FILTERS
 - ③ NPT DRAINS (MINIMUM OF 2)
 - ④ ALUMINUM FLAT PLATE HEAT EXCHANGER
 - ⑤ NEMA 3R ELECTRICAL ENCLOSURE
 - ⑥ RIS ISOLATORS (SPRING OPTIONAL)
 - ⑦ FC DWDI BLOWER (BI/AF PLENUM OPTIONAL)
 - ⑧ NEMA ODP MOTOR (TEFC OPTIONAL)
 - ⑨ EXHAUST AIR BACKDRAFT DAMPER
 - ⑩ ACCESS DOOR WITH CAM-LOK LATCHES
 - ⑪ FACE AND BYPASS DAMPER
- OPTIONS**
- ⑫ RECIRCULATION DAMPER
 - ⑬ CHILLED WATER OR DX COIL
 - ⑭ HEATING COIL
 - ⑮ INDIRECT GAS FIRED FURNACE SECTION
 - ⑯ SCROLL COMPRESSORS OR HEAT PUMP
 - 17 WEATHERHOOD WITH BIRDSCREEN (NOT SHOWN)
 - 18 REMOTE CONDENSING SECTION (NOT SHOWN)
 - 19 DIRECT GAS FIRED BURNER SECTION
- CONSULT FACTORY FOR DETAILS (NOT SHOWN)



Step 1: Use outdoor airflow to select a unit Model #.

Step 2: Unit dimensions are then determined by supply airflow, so long as the Model # selected in Step 1 is within the allowable Model Range.

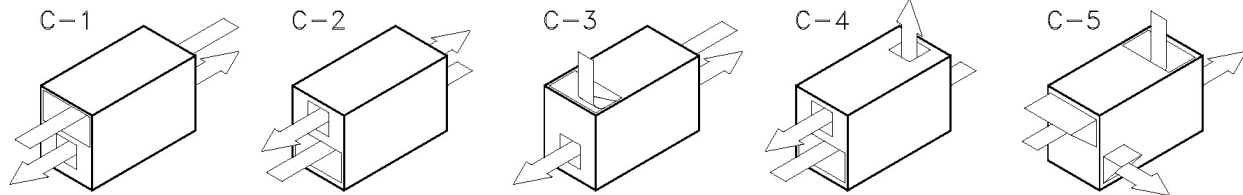
Step 1		Model #
Outdoor Airflow		
Min cfm	Max cfm	
1000	1400	PXHR-20-24
1400	1750	PXHR-24-24
1750	2200	PXHR-20-36
2200	2850	PXHR-24-36
2850	3300	PXHR-24-48
3300	3850	PXHR-30-36
3850	4450	PXHR-40-36
4450	5050	PXHR-30-48
5050	5800	PXHR-30-60
5800	6550	PXHR-40-48
6550	7350	PXHR-50-48
7350	8300	PXHR-40-60
8300	9050	PXHR-50-60
9050	10050	PXHR-40-72
10050	11600	PXHR-50-72
11600	13500	PXHR-60-60
13500	14900	PXHR-60-72
14900	17500	PXHR-50-96
17500	20250	PXHR-60-96
20250	23750	PXHR-80-72
23750	28500	PXHR-80-96

Step 2		Model Range		Dimension (Inches)										Est. Weight (lbs)
Min cfm	Max cfm	Min	Max	A*	B	C†	D	E	F	G	H			
1000	1400	20-24	20-24	114	34	40	14	14	10	18			Consult Factory	1,000
1400	1750	20-24	24-24	114	50	40	36	14	12	18				1,250
1750	2200	20-24	20-36	132	34	56	14	18	10	21				1,500
2200	2850	20-24	24-36	132	50	56	26	18	16	21				1,750
2850	3300	20-24	24-48	132	66	56	38	18	18	21				2,000
3300	3850	20-24	30-36	156	50	69	26	22	18	24				2,250
3850	4450	24-24	40-36	156	66	69	38	22	20	24				2,600
4450	5050	24-24	30-48	156	83	69	51	22	24	24				3,000
5050	5800	20-36	30-60	198	51	86	27	34	20	33	36			3,700
5800	6550	20-36	40-48	198	67	86	37	34	24	33	36			4,250
6550	7350	24-36	50-48	198	84	86	52	34	24	33	42			5,000
7350	8300	24-36	40-60	210	100	86	64	34	28	33	42			5,500
8300	9050	24-48	50-60	240	68	106	40	38	24	42	42			5,750
9050	10050	30-36	40-72	240	84	106	52	38	24	42	42			6,250
10050	11600	40-36	50-72	240	100	106	64	38	28	42	72			7,250
11600	13500	30-48	60-60	240	132	106	88	38	36	42	72			8,500
13500	14900	30-48	60-72	270	84	114	52	42	32	45	84		7,900	
14900	17500	40-48	50-96	270	100	114	64	42	36	45	84		8,750	
17500	20250	50-48	60-96	270	132	114	88	42	42	45	84		10,500	
20250	23750	40-60	80-72	324	100	132	64	46	42	54	84		11,500	
23750	28500	40-72	80-96	324	132	132	88	46	48	54	96		13,750	

For Higher Airflows Consult Factory.

* Includes length of Heating and Cooling coils.

† Does not include custom height of Roof Curb.



Consult factory for other available configurations.

Controls Flexibility for Pool Ventilation

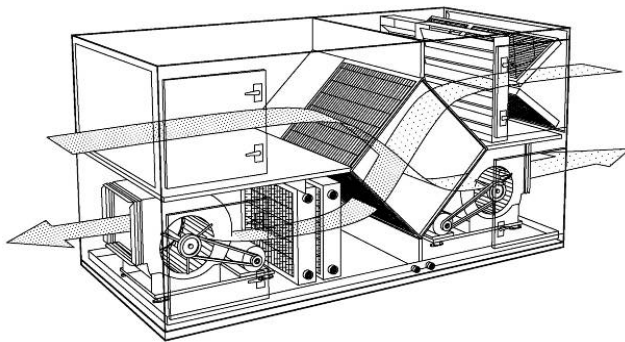
This unit was designed to provide fresh air ventilation for a modest-sized pool in Wisconsin. It was built for indoor installation and has a DX coil with controls by others. XeteX, however, provided straightforward analog controls for the blowers and the exchanger. This allowed XeteX to implement specialized energy recovery control functions such as Frost Control, Economizer, and Summer Cooling Mode, but it left the customer with the flexibility to use a controls contractor to configure the rest of the equipment on-site. The unit was therefore able to meet the specification without providing any superfluous components. And with an energy recovery rate as high as 82.6% under winter design conditions, it offers tremendous value to the customer.



The finished PXHR unit

Performance Specification

Model: **PXHR-30G-36E-BP-CD**
Supply cfm: 3,700
Exhaust cfm: 3,900
Built: September, 2006
Dimensions: 62" H, 144" L, 56" W
Weight: 2,100 lbs
Energy Recovered: 314 MBH (Winter)
Recovered: 34 MBH (Summer)
Design Conditions: -15 °F / 100% RH (Winter)
95 °F / 47% RH (Summer)

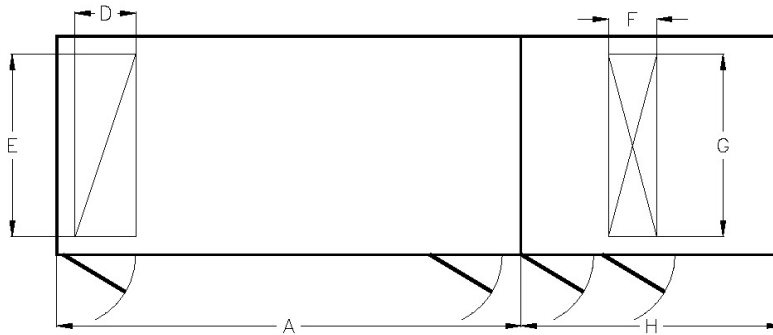


Energy Recovery and Airflow controls are configured in a simple panel.

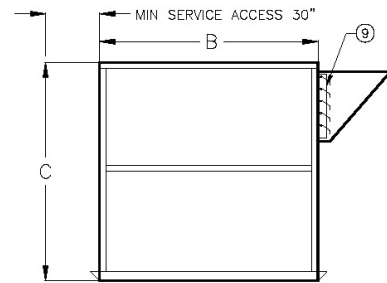
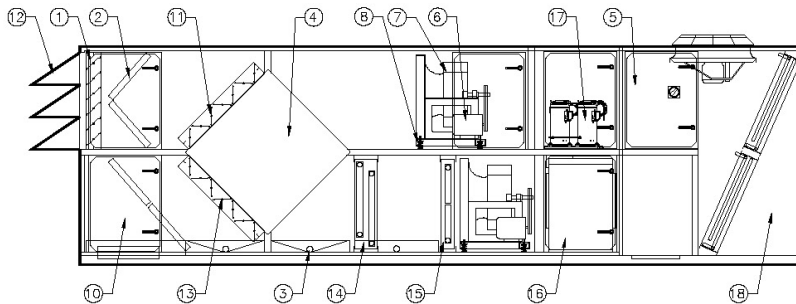
Unit Features

- An XLT Type H Epoxy Coated Aluminum Flat Plate Exchanger operates at 82.6% effectiveness under Winter Design Conditions and at 61% effectiveness in Summer.
- The Double Wall cabinet has an 18 gauge Galvanized Steel Exterior, 22 gauge Galvanized Interior, and 1" thick Fiber-Glass Insulation. Frame is Welded Structural Steel.
- 12" FC DWDI Blowers are belt driven by TEFC, 3 hp, High Efficiency motors. The blowers are mounted on common frames with RIS Isolators and Flexible Duct Connections.
- A DX coil provides 10 Tons cooling (ACCU and DX controls by others).
- 2" MERV 8 filters on both outdoor and return airstreams protect the unit from debris.
- Face-and-Bypass and Outside Air Shutoff Dampers and Actuators are provided.
- Single Point Power Terminal Blocks, Main Disconnect, Protected Branch Circuits, and access to Frost Control, Economizer, and Summer Changeover functions are contained in an Electrical Panel.

Model: PXHS



- ① OUTSIDE AIR SHUTOFF DAMPER
 - ② 2" 30/30 TYPE PLEATED FILTERS
 - ③ NPT DRAINS (MINIMUM OF 2)
 - ④ ALUMINUM FLAT PLATE HEAT EXCHANGER
 - ⑤ NEMA 3R ELECTRICAL ENCLOSURE
 - ⑥ NEMA ODP OR TEFC MOTOR
 - ⑦ BI PLENUM BLOWER
 - ⑧ SPRING VIBRATION ISOLATORS
 - ⑨ EXHAUST AIR BACKDRAFT DAMPER
 - ⑩ ACCESS DOOR WITH CAM-LOK LATCHES
 - ⑪ FACE AND BYPASS DAMPER
- OPTIONS**
- ⑫ WEATHERHOOD WITH BIRDSCREEN
 - ⑬ RECIRCULATION DAMPER
 - ⑭ CHILLED WATER OR DX COIL
 - ⑮ HEATING COIL
 - ⑯ INDIRECT GAS FIRED FURNACE SECTION
 - ⑰ SCROLL COMPRESSORS OR HEAT PUMP
 - ⑱ AIR COOLED CONDENSING SECTION
 - ⑲ DIRECT GAS FIRED BURNER SECTION
- CONSULT FACTORY FOR DETAILS (NOT SHOWN)



Step 1: Use outdoor airflow to select a unit Model #.

Step 2: Unit dimensions are then determined by supply airflow, so long as the Model # selected in Step 1 is within the allowable Model Range.

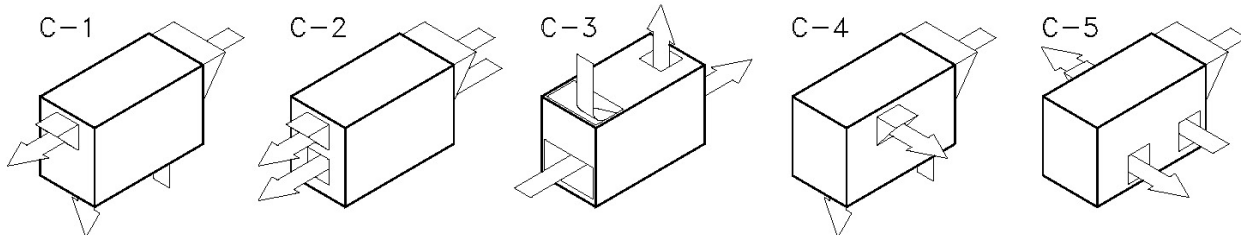
Step 1		Model #
Outdoor Airflow		
Min cfm	Max cfm	
1000	1400	PXHS-20-24
1400	1750	PXHS-24-24
1750	2200	PXHS-20-36
2200	2850	PXHS-24-36
2850	3300	PXHS-24-48
3300	3850	PXHS-30-36
3850	4450	PXHS-40-36
4450	5050	PXHS-30-48
5050	5800	PXHS-30-60
5800	6550	PXHS-40-48
6550	7350	PXHS-50-48
7350	8300	PXHS-40-60
8300	9050	PXHS-50-60
9050	10050	PXHS-40-72
10050	11600	PXHS-50-72
11600	13500	PXHS-60-60
13500	14900	PXHS-60-72
14900	17500	PXHS-50-96
17500	20250	PXHS-60-96
20250	23750	PXHS-80-72
23750	28500	PXHS-80-96

Step 2		Dimension (Inches)											Est. Weight (lbs)
Supply Airflow		Model Range		A*	B	C†	D	E	F	G	H		
Min cfm	Max cfm	Min	Max										
1000	1400	20-24	20-24	114	34	40	12	14	11.0	14		1,000	
1400	1750	20-24	24-24	114	50	40	12	36	12.5	36		1,250	
1750	2200	20-24	20-36	132	34	56	12	14	11.0	14		1,500	
2200	2850	20-24	24-36	132	50	56	12	26	12.5	26		1,750	
2850	3300	20-24	24-48	132	66	56	12	38	14.5	38		2,000	
3300	3850	20-24	30-36	156	50	69	18	26	14.5	26		2,250	
3850	4450	24-24	40-36	156	66	69	18	38	17.0	38		2,600	
4450	5050	24-24	30-48	156	83	69	18	51	17.0	51		3,000	
5050	5800	20-36	30-60	198	51	86	18	27	17.0	27		3,700	
5800	6550	20-36	40-48	198	67	86	18	37	17.0	37		4,250	
6550	7350	24-36	50-48	198	84	86	18	52	20.0	52		5,000	
7350	8300	24-36	40-60	210	100	86	18	64	20.0	64		5,500	
8300	9050	24-48	50-60	240	68	106	24	40	20.0	40		5,750	
9050	10050	30-36	40-72	240	84	106	24	52	20.0	52		6,250	
10050	11600	40-36	50-72	240	100	106	24	64	26.0	64		7,250	
11600	13500	30-48	60-60	240	132	106	24	88	28.0	88		8,500	
13500	14900	30-48	60-72	270	84	114	24	52	26.0	52		7,900	
14900	17500	40-48	50-96	270	100	114	24	64	28.0	64		8,750	
17500	20250	50-48	60-96	270	132	114	24	88	32.0	88		10,500	
20250	23750	40-60	80-72	324	100	132	24	64	32.0	64		11,500	
23750	28500	40-72	80-96	324	132	132	24	88	36.0	88		13,750	

For Higher Airflows Consult Factory.

* Includes length of Heating and Cooling coils.

† Does not include custom height of Roof Curb.



Consult factory for other available configurations.

Complete Packaged Refrigeration and Energy Recovery

This was one of several units built by XeteX for a school in Connecticut. It incorporates energy recovery, heating, and refrigeration all in one package. The entire refrigeration circuit including the air cooled condensing section is contained within the unit, and all plumbing and wiring was done at the factory. The interior of the unit is also Heresite-coated to withstand the caustic pool environment. With a flat plate heat exchanger operating at up to 82.5% effectiveness, this one unit provides worry-free, year-round air conditioning while also minimizing operating cost.



The finished PXHS unit incorporates a full refrigeration circuit.



The air cooled condensing section is located on one end of the unit.



XeteX completely plumbed the refrigeration circuit and provided all wiring and controls.



Performance Specification

Model:	PXHS-40-60-RT-BP- CD-HW-HG-ACCU
Supply cfm:	19,950 (6,700 OA)
Exhaust cfm:	8,700
Built:	September, 2008
Dimensions:	102" H, 306" L, 100" W
Weight:	14,500 lbs
Energy	474 MBH (Winter)
Recovered:	64 MBH (Summer)
Design	5 °F / 100% RH (Winter)
Conditions:	93 °F / 46% RH (Summer)

Unit Features

- An XLT Type H Epoxy Coated Aluminum Flat Plate Exchanger operates at 82.5% effectiveness under Winter Design Conditions and at 70% effectiveness in Summer.
- The Double Wall cabinet has an 18 gauge Painted Galvanealed Steel Exterior, 22 gauge Galvanized Interior, and 2" thick Fiber-Glass Insulation. Frame is Welded Structural Steel. Drain Pan is Heresite coated.
- Heresite coated 30" (Supply) and 20" (Return) Quiet Airfoil fans are controlled by VFDs and belt driven by Premium Efficiency TEFC motors (25 hp Supply, 10 hp Exhaust).
- Aluminum Mesh Filters are installed in both airstreams.
- Unit supplied with Hot Water Coil and DX cooling complete with Hot Gas Reheat, and Air Cooled Condensing Unit with all equipment, plumbing, wiring, and controls by XeteX.

Model PXCH/CV/HR/HS Unit Specification

Contractor shall provide a Model PXCH/V packaged, (roof mounted/indoor mounted), air-to-air, heat recovery ventilator as manufactured by XeteX, Inc. Unit to include aluminum flat plate exchanger, supply air and exhaust air blowers, motors with starters and relays, outside air filters, adjustable defrost control, and specified options.

Unit shall have a welded structural steel base frame with integral lifting lugs. Frame shall be coated with rust inhibiting paint. Lower floor shall have a sub-floor of 22 gauge galvanized steel, formed structural supports with rigid closed cell load-bearing insulation under blowers and components, and an interior floor of 16 gauge galvanized steel.

Cabinet frame exterior shall be of formed 18 gauge (minimum) galvanized steel. Panels (fixed and access) to be of 18 gauge galvanized steel. Frame and panels to have double-wall construction with [1", 1.5", or 2", 4" available] thick, 3# density, hardboard fiberglass insulation; an internal liner of 22 gauge (minimum) galvanized steel; and silicone sealant to provide a complete vapor barrier and non-contaminating surface to all airstreams. Framing and panels of dissimilar metals that could create a galvanic effect are not allowed. Optional fully painted exterior with 2 coats minimum of High Performance Acrylic over galvanealed sheet metal. Optional fully painted interior with 2 coats minimum of epoxy over galvanealed sheet metal. Unit shall have a stainless steel drain pan, minimum 3" deep, with MPT drains on supply and exhaust air plenums.

Provide access to all exchanger surfaces, blowers, motors, and filters, through double walled, hinged, and gasketed access doors. Doors shall be held closed by a minimum of two roller cam latches. Continuous hollow rubber gasket shall be applied to all access openings to provide water and airtight seals. Door hinges shall be galvanized steel (optional—stainless steel).

Air-to-air heat exchanger shall be an XLT stationary aluminum flat-plate type manufactured by XeteX. Heat transfer surface shall be formed aluminum plates with enhanced surface corrugation for increased performance. Exchanger shall be capable of withstanding a pressure difference between airflows of up to 7.2" w.g. without deforming air passages. Unit shall be capable of operating in temperatures up to 190 °F. Standard cell construction shall have a maximum cross contamination between airflows of 0.1% of total airflow. The entire cell shall be capable of being visibly inspected and cleaned as required.

Blowers shall be forward curved, DWDI, class I, and arranged in a draw through configuration relative to exchanger for quiet and efficient operation. Direct drive motors shall be high efficiency, multi-speed, PSC type with internal thermal overload protection. Belt drive motors to be high efficiency, ODP, T-frame, nominal 1750 rpm, 1.15 service factor minimum, and mounted on an adjustable base with variable pitch sheaves. Motor and blower to be mounted on common frame and isolated from unit case with RIS (spring optional) isolators and flexible duct connections. Motors and blowers shall have V-belt drives with variable pitch sheaves. Belt drive fans shall have a hollow rubber gasket around the fan discharge to provide an airtight seal while allowing for easy removal and replacement of the fan without screws or permanent fasteners. The discharge gasket shall isolate the fan from the unit casing and eliminate the requirement for an expansion duct fitting.

Electrical controls shall include motors with internal thermal protection and relays for direct drive units, motor starters with overloads for belt drive units, circuit breakers, control transformer for low voltage controls, service switch, and terminal points.

Outdoor air and return air filters shall be 2" pleated 30/30 type. Filters shall be mounted within unit in galvanized holding frames upstream of exchanger and accessible through access panels.

Dampers shall have heavy duty extruded aluminum frames and 4" extruded aluminum air-foil blades mounted on brass shafts and supported and inter-connected by nylon gears. Low leakage dampers shall have hollow rubber jamb seals built into both the blades and the frame. The side casings shall enclose the gears with ABS plastic covers that also serve as seals in the closed position. Outside air dampers shall be mounted on the inlet of the unit and operated by a spring return direct-coupled actuator with an end switch to be interlocked with the supply air motor relay. Exhaust air backdraft damper to be parallel blade. Face-and-bypass dampers shall be interlocked so that when the face damper is open the bypass damper shall be closed.

Weatherized outdoor construction shall include sloped roof panels with rain gutters that overhang the sidewalls to shed water away from access panels, capped roof seams, intake and exhaust weather hoods with bird-screens, outside air shut-off damper, and exhaust air backdraft damper. Secondary roof panels that could trap moisture are not allowed. Roof curb shall be 16 gauge (minimum) galvanized steel with additional supports and cross members as needed. Curb to have 1.5" thick fiberglass insulation and wood nailer.