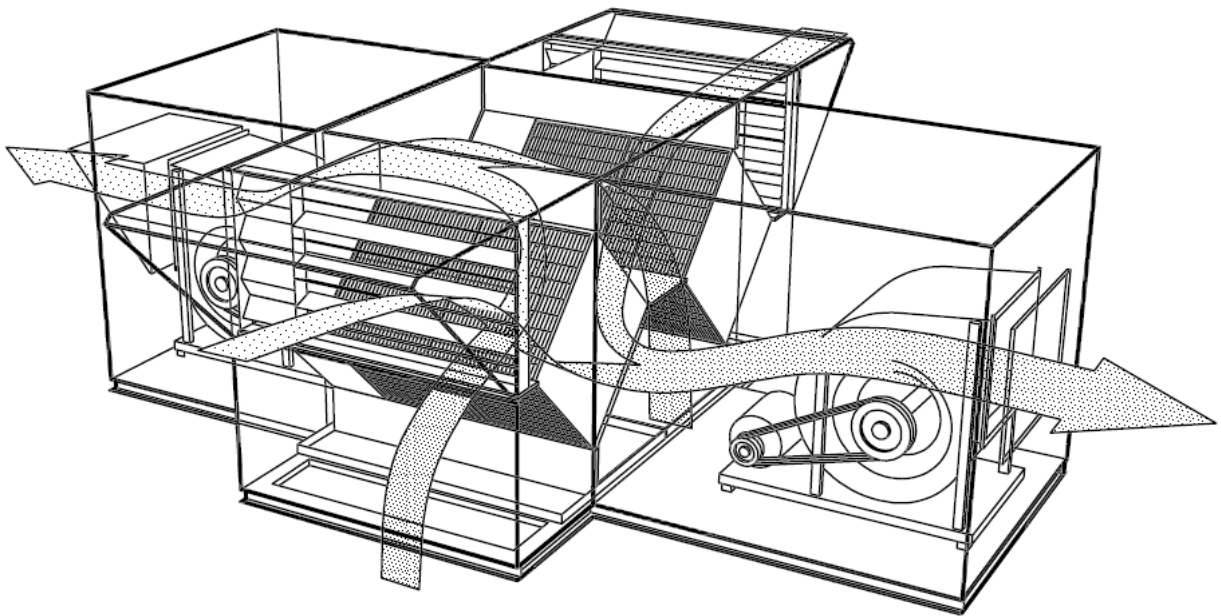




Models XLR and XTR

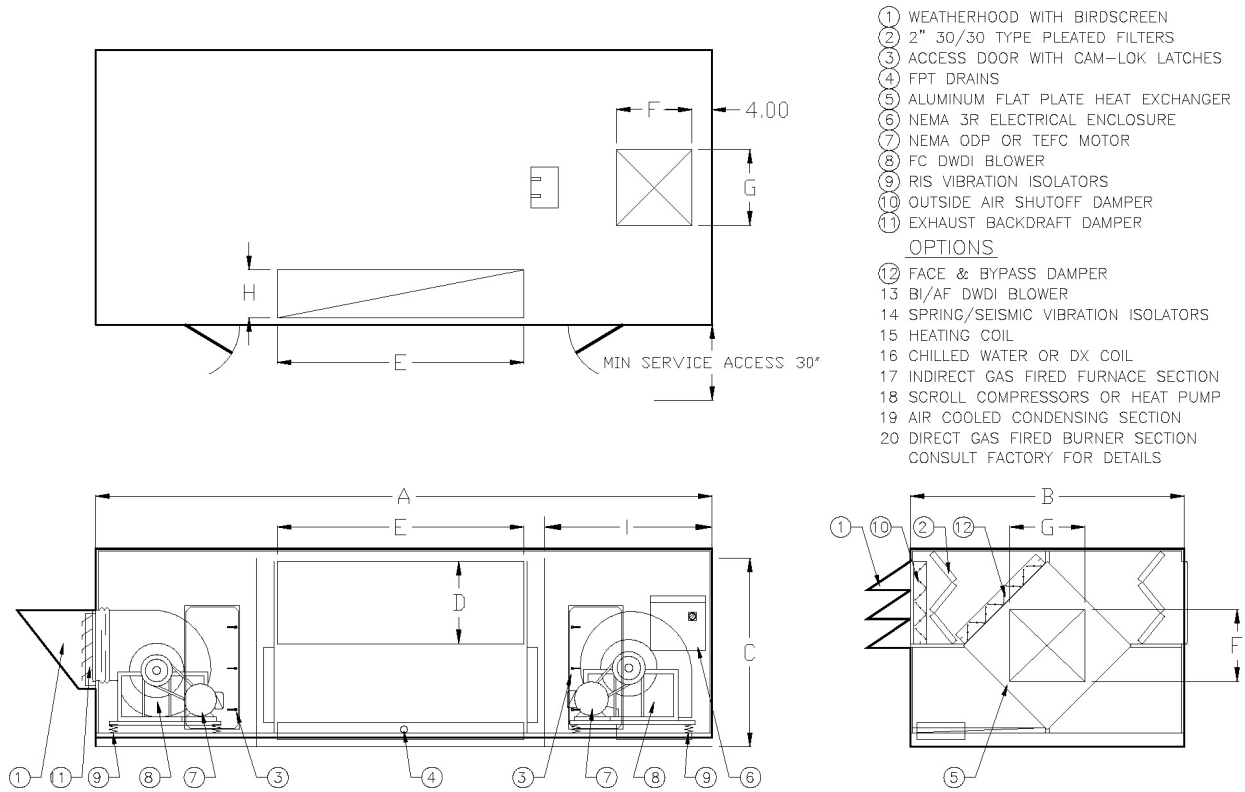
High capacity, packaged, roof mounted or indoor mounted energy recovery ventilator featuring an aluminum air-to-air flat plate heat exchanger in a compact design with high efficiencies of 70 to 75%. Suitable for large spaces including office buildings, factories, schools, libraries, hotels, water treatment plants, etc.



- The XLR design is unique providing high capacity in a low profile unit featuring a single, wide exchanger in a cross-over configuration.
- The XTR has a unique design incorporating high capacity into a low profile unit featuring a double exchanger in a parallel air flow configuration.

www.xetexinc.com

Model: XLR

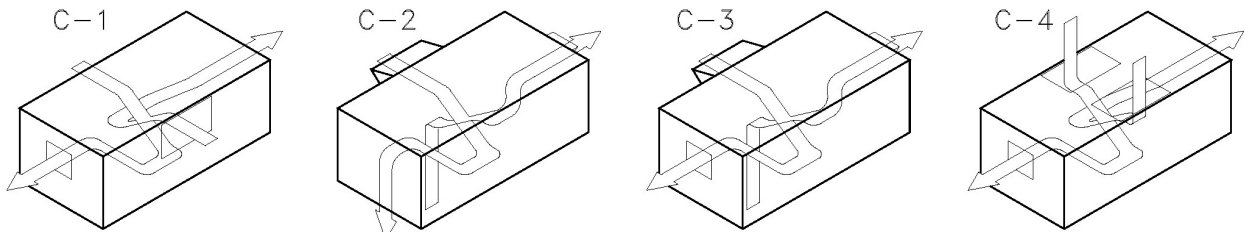


Model #	Dimension (Inches)									Bypass A & D+	Blower Size	Est. Weight	Nominal CFM
	A	B	C*	D	E	F	G	H	I				
XLR 30 - 36 ¹	148	74	52	22	36	14	16	15	50	12	12" FC	2,000	3,500
XLR 30 - 48 ¹	159	74	52	22	47	16	19	15	50	16	15" FC	2,250	5,000
XLR 30 - 60 ¹	171	74	52	22	59	19	22	15	50	20	18" FC	2,500	6,000
XLR 40 - 48 ¹	175	96	72	31	47	19	22	20	58	16	18" FC	3,500	6,500
XLR 40 - 72 ¹	199	96	72	31	71	25	25	20	58	24	20" FC	4,000	9,800
XLR 40 - 96 ²	223	96	72	31	95	28	28	20	58	32	22" FC	4,500	13,000
XLR 50 - 60 ²	231	122	98	44	59	25	25	28	80	20	20" FC	5,200	10,000
XLR 50 - 84 ²	255	122	98	44	83	28	28	28	80	28	22" FC	6,000	14,000
XLR 50 - 108 ²	278	122	98	44	106	32	32	28	80	36	25" FC	6,800	18,000
XLR 50 - 132 ²	302	122	98	44	130	35	35	28	80	44	27" FC	7,800	22,000

¹ Add 24" minimum to dim A for cooling coil section.

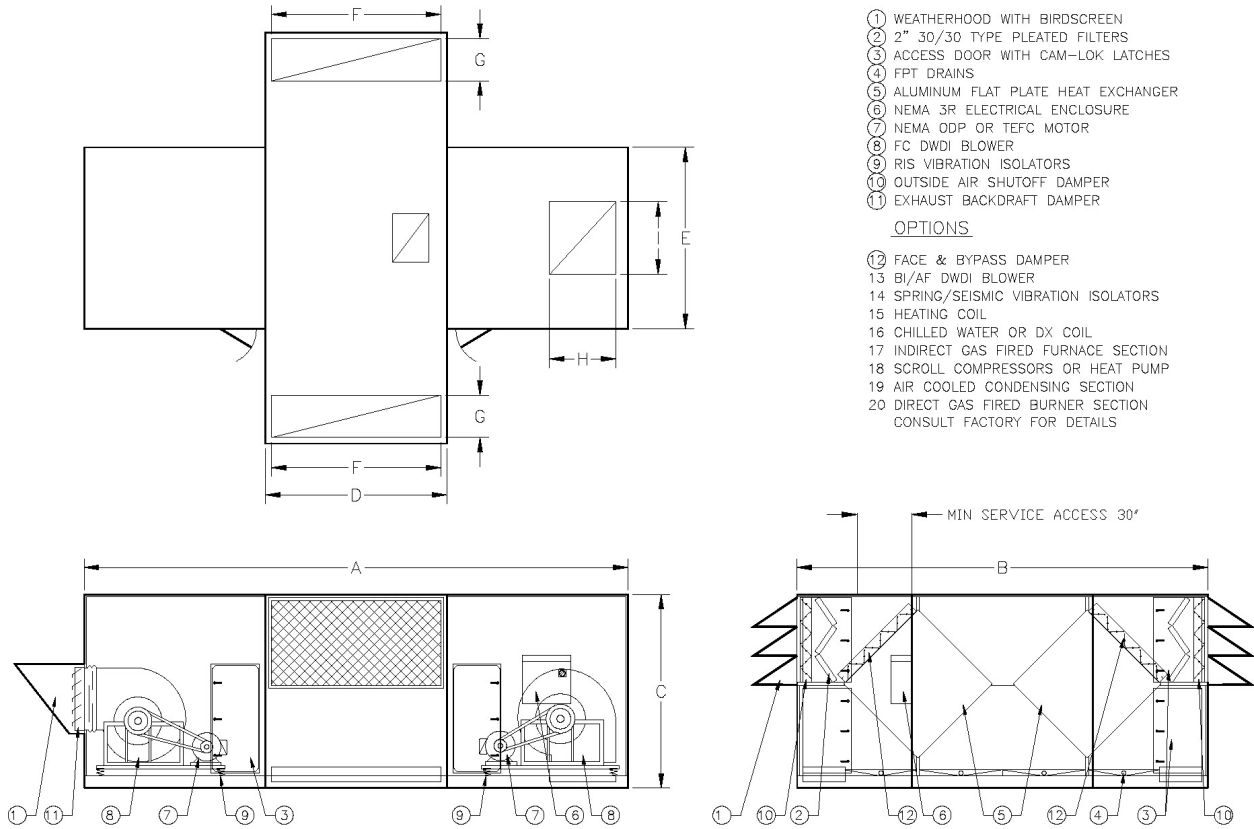
* Does not include custom height of Roof Curb.

² Add 30" minimum to dim A for cooling coil section.



Consult factory for other available configurations.

Model: XTR



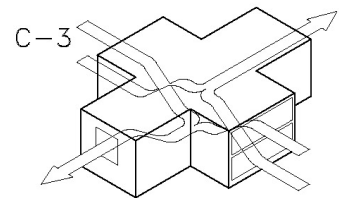
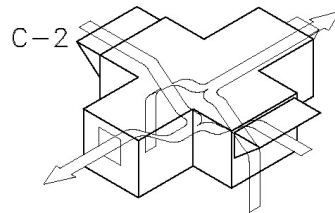
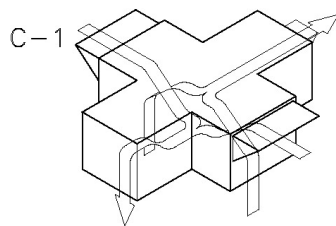
Model #	Dimension (Inches)										Bypass A & D+	Blower Size	Nominal CFM
	A	B	C*	D	E	F	G	H	I				
XTR 40 - 120 ¹	225	184	80	65	77	56	20	24	32	20	22" BI	16,800	
XTR 40 - 144 ¹	237	184	80	77	77	68	20	26	36	24	24" BI	20,000	
XTR 50 - 120 ²	277	210	100	65	103	56	20	26	36	20	24" BI	20,000	
XTR 50 - 144 ²	289	210	100	77	103	68	20	32	42	24	30" BI	24,000	
XTR 50 - 192 ²	311	210	100	99	103	90	20	35	48	32	33" BI	32,000	
XTR 80 - 120 ²	277	314	124	65	153	56	30	39	52	20	36" BI	35,000	
XTR 80 - 144 ³	289	314	124	77	153	68	30	42	58	24	40" BI	42,000	
XTR 80 - 192 ³	311	314	124	99	153	90	30	52	70	32	49" BI	55,000	

¹ Add 30" minimum to dim A for cooling coil section.

* Does not include custom height of Roof Curb.

² Add 36" minimum to dim A for cooling coil section.

³ Add 42" minimum to dim A for cooling coil section.



Consult factory for other available configurations.

Model XLR/XTR Unit Specification

Contractor shall provide a Model XTR/XLR high capacity, packaged, (roof mounted/indoor mounted), air-to-air heat recovery ventilator as manufactured by XeteX, Inc. Unit to include an aluminum flat plate exchanger, supply air and exhaust air blowers, motors with starters and relays, air filters, adjustable frost control, and other specified options.

Unit shall have a welded structural steel base frame with integral lifting lugs. Frame shall be coated with rust inhibiting paint. Lower floor shall have a sub-floor of 22 gauge galvanized steel, formed structural supports with rigid closed cell load-bearing insulation under blowers and components, and an interior floor of 16 gauge galvanized steel. Return air plenum and drain pan shall be provided by [XeteX/contractor].

Cabinet frame exterior shall be of formed 18 gauge (minimum) galvanized steel. Panels (fixed and access) to be of 18 gauge galvanized steel. Frame and panels to have double-wall construction with [1", 1.5", or 2", 4"] thick, 3# density, hardboard fiberglass insulation; internal liner of 22 gauge (minimum) galvanized steel; and silicone sealant to provide a complete vapor barrier and non-contaminating surface to all airstreams. Framing and panels of dissimilar metals that could create a galvanic effect are not allowed. Optional fully painted exterior with 2 coats minimum of High Performance Acrylic over galvanealed sheet metal. Optional fully painted interior with 2 coats minimum of epoxy over galvanealed sheet metal.

Provide access to all exchanger surfaces, blowers, motors, and filters through double walled, hinged, and gasketed access doors. Doors shall be held closed by a minimum of two roller cam latches. Continuous hollow rubber gasket shall be applied to all access openings to provide water and airtight seals. Door hinges shall be galvanized steel (optional—stainless steel).

Air-to-air heat exchanger shall be an XLT stationary, aluminum, flat plate type manufactured by XeteX. Heat transfer surface shall be formed aluminum plates with enhanced surface corrugation for increased performance. Exchanger shall be capable of withstanding a pressure difference between airflows of up to 7.2" (optional 27") w.g. without deforming air passages. Unit shall be capable of operating in temperatures up to 190 °F (optional 390 °F). Standard cell construction shall have a maximum cross contamination between airflows of 0.1% of total airflow. The entire cell shall be capable of being visibly inspected and cleaned as required.

FC—Blowers shall be forward-curved, DWDI, class I, and arranged in a draw through configuration relative to exchanger for quiet efficient operation.

PF—Blowers shall be a backward inclined, airfoil, centrifugal plenum (optional plug) type without scroll housings and arranged in a draw-through configuration. Fans shall incorporate a wheel; heavy gauge reinforced steel inlet plate shaft, and bearings configured in AMCA Arrangement 3 to form a heavy-duty integral unit. Blowers shall be tested to AMCA standard 210 and bear the AMCA certified ratings seal for performance. The fan blades shall be continuously welded, die-formed airfoil type, designed for maximum efficiency and quiet operation. Impellers shall be statically and dynamically balanced and non-overloading and complete fan assembly shall be test balanced at the operating speed prior to shipment. Bearings are to be heavy duty, grease lubricated, and selected for minimum average bearing L–10 life of 40,000 hours (optional L–50 life of 200,000) at the maximum class RPM.

Motors shall be premium efficiency (optional high efficiency), ODP, T-frame (optional TEFC or XP), nominal 1750 rpm (optional 3,600 rpm), 1.15 service factor minimum, and mounted on an adjustable base. Motor and blower are to be mounted on a common frame, isolated from the unit case with [FC—RIS isolators (optional spring or seismic restrained) and discharge gasket duct connection (optional flexible duct connections), PF—Spring isolators with a minimum of 1" deflection (optional seismic or restrained isolators) with flexible plenum connections.] Motors and blowers shall have V-belt drives with variable pitch sheaves on motors up to 10 hp. Motors, blowers, and frames shall be coated with rust inhibiting paint (optional epoxy coated).

Electrical controls shall include motor starters with overloads, fuses, control transformer for low voltage controls, service switch, and terminal points. Outdoor air and return air filters shall be 2" pleated 30/30 type. Filters shall be mounted within unit in galvanized holding frames upstream of exchanger and accessible through access panels.

Dampers shall have heavy duty extruded aluminum frames and 4" extruded aluminum air-foil blades mounted on brass shafts and supported and inter-connected by nylon gears. Low leakage dampers shall have hollow rubber jamb seals built into both the blades and the frame. The side casings shall enclose the gears with ABS plastic covers that also serve as seals in the closed position. Outside air dampers shall be mounted on the inlet of the unit and operated by a spring return direct-coupled actuator with an end switch to be interlocked with the supply air motor relay. Exhaust air backdraft damper to be parallel blade. Face-and-bypass dampers shall be interlocked so that when the face damper is open the bypass damper shall be closed.

Weatherized outdoor construction shall include sloped roof panels with rain gutters that overhang the sidewalls to shed water away from access panels, capped roof seams, intake and exhaust weather hoods with bird-screens, outside air shut-off damper, and exhaust air backdraft damper. Secondary roof panels that could trap moisture are not allowed. Roof curb shall be 16 gauge (minimum) galvanized steel with additional supports and cross members as needed. Curb to have 1.5" thick fiberglass insulation and wood nailer.